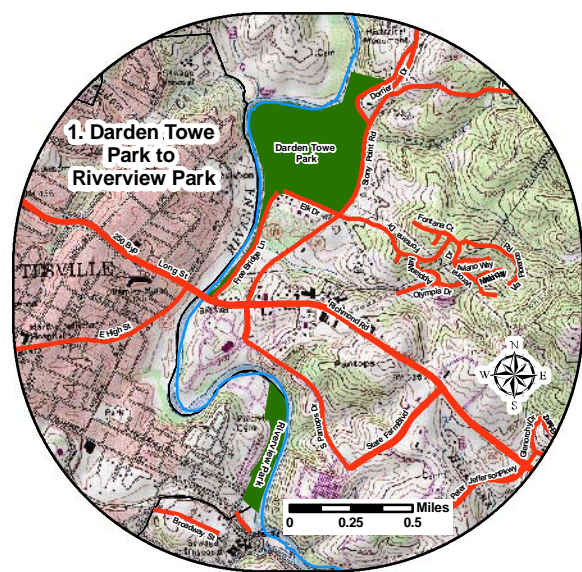
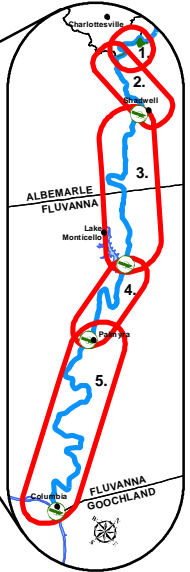
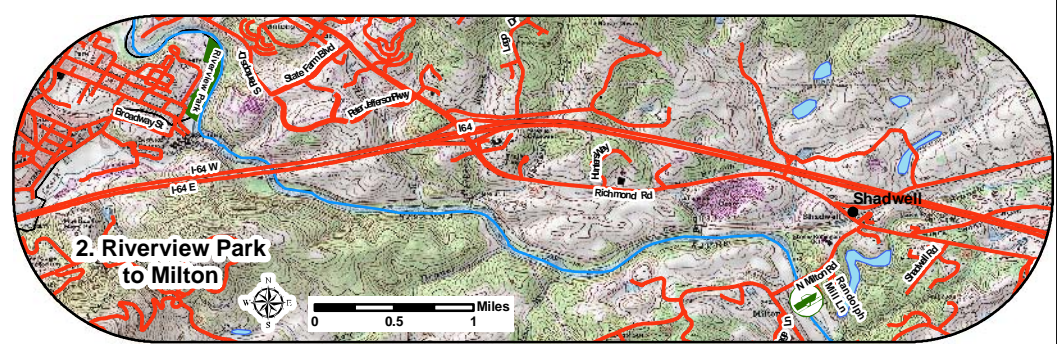


Rivanna River Public Landings Float Map

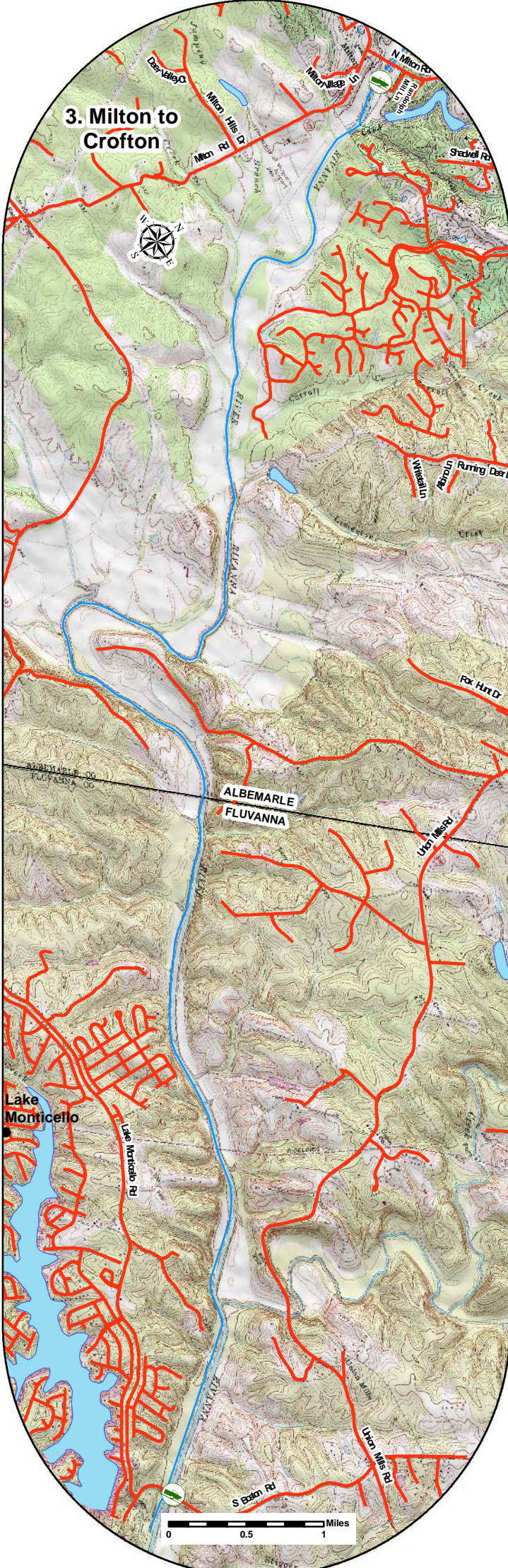
3. Milton to Crofton
Skill level required: Novice.
Distance: 10 miles
Put-in: (Poor) Mud bank at end of Randolphs Mill Road on VA route 729.
Parking: Good.
Take-out: (Excellent) VA. Dept. of Game and Inland Fisheries public boat access on VA Route 600.
Parking: Good
Scenery: Excellent.
Rapids: One class I - II drop.
Ease of Rescue: Less Accessible.
Hazards: None.



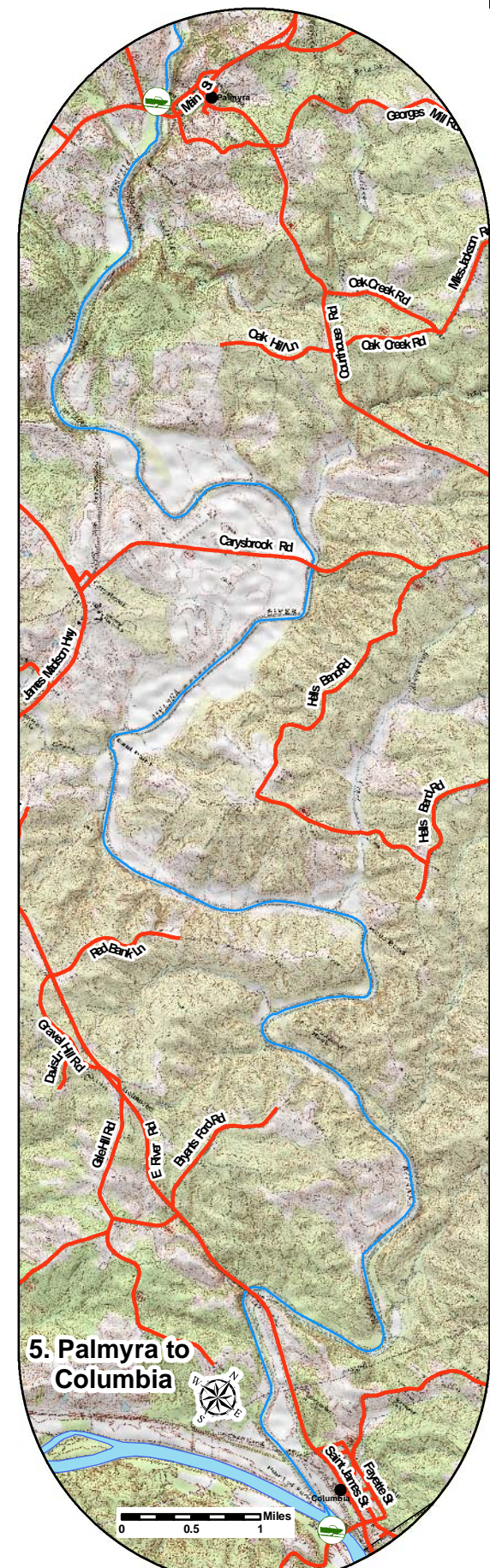
1. Darden Towe Park to Riverview Park
Skill level required: Novice.
Distance: 2 miles
Put-in: (Good) Wooden canoe launch at west edge of Darden Towe Park on VA Route 20 just north of Charlottesville.
Parking: Good with one exception - park regulations prohibit overnight parking.
Take-out: (Poor) Mud bank at east edge of Riverview Park on Chesapeake Street in Charlottesville. Or, can continue to take-out at Milton for a one-day float of 6.3 miles.
Parking: Good with one exception - park regulations prohibit overnight parking.
Scenery: Excellent.
Rapids: None.
Ease of Rescue: Very Accessible.
Hazards: None.



2. Riverview Park to Milton
Skill level required: Intermediate.
Distance: 4.3 miles
Put-in: (Poor) Mud bank at east edge of Riverview Park on Chesapeake Street in Charlottesville.
Parking: Good with one exception - park regulations prohibit overnight parking.
Take-out: (Poor) Mud bank at end of Randolphs Mill Road on VA Route 729.
Parking: Good
Scenery: Excellent.
Rapids: Several class II - III drops.
Ease of Rescue: Accessible.
Hazards: None.



4. Crofton to Palmyra
Skill level required: Novice.
Distance: 6.5 miles.
Put-in: (Excellent) VA Dept. of Game and Inland Fisheries public boat access on VA Route 600.
Parking: Good.
Take-out: (Excellent) VA Dept. of Game and Inland Fisheries public boat access on VA Route 53 in Palmyra.
Parking: Good.
Scenery: Excellent.
Rapids: One class I - II drop.
Ease of Rescue: Accessible.
Hazards: None.



5. Palmyra to Columbia
Skill level required: Intermediate.
Distance: 16 miles
Put-in: (Excellent) VA Dept. of Game and Inland Fisheries public boat access on VA Route 53 in Palmyra.
Parking: Good.
Take-out: (Excellent) VA Dept. of Game and Inland Fisheries public boat access on VA Route 690 across the James River from Columbia.
Parking: Good.
Scenery: Excellent.
Rapids: Several class I - II drops and one class II - III drop.
Ease of Rescue: Isolated.
Hazards: None.

Sources:
 Topographic Maps - National Geographic
 Roads - 2009 RCL VGIN
 Conservation Lands - DCR
 All Other Data - VDGIF
 VDGIF - Lenée Pennington, GISP 08/17/10